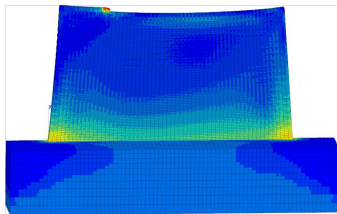
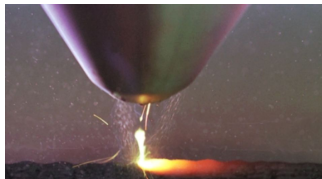


FE model of the direct laser fabrication of Ta6V components



Industrial partners : GIFAS
(Snecma, Dassault, Eurocopter,
EADS, MBDA, GIP-GERAILP)

- Process modeling, including phase kinetics and multiphase behaviour
- Thermomechanical FE computations
- Prediction of residual stress fields and grain morphology
- Application to produce near net shape components