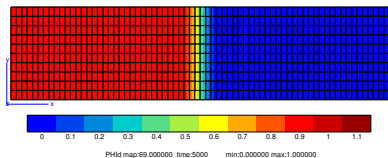
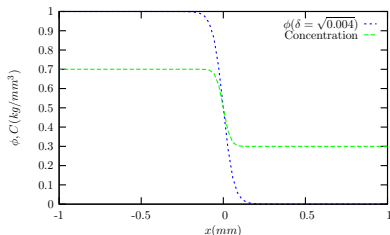


# FE formulation of the phase field models

Industrial partner:  
System@tic Network  
Academic partner: Mines Nancy



- Use of microforce theory (Gurtin) in the framework of the thermodynamics of irreversible processes
- Clear boundary conditions and *phase constitutive equations* with evolution equations are exhibited
- Can be used for coupled diffusion–phase transformation problems